

MODEL**EB****SERIES 11**

BI-DIRECTIONAL KNIFE GATE VALVE

The **EB (SER.11)** model knife gate is a bi-directional valve designed for general industrial service applications. The design of the body and seat assures non-clogging shut off on suspended solids in industries such as:

- Wastewater treatment plants
- Food and Beverage
- Chemical plants
- etc.

Sizes: DN 2"/50mm to DN 52"/1200mm (larger diameters on request)

Working pressure:

DN 2"/50mm to DN 10"/250mm:	150psi/10 kg/cm ²
DN 12"/300mm to DN 16"/400mm:	90psi/6 kg/cm ²
DN 18"/450mm:	75psi/5 kg/cm ²
DN 20"/500mm to DN 24"/600mm:	60psi/4 kg/cm ²
DN 28"/700mm to DN 52"/1200mm:	30psi/2 kg/cm ²

Standard flange connection: DIN PN 10

Other flange connections: on request

Directives: DIR 2006/42/CE (MACHINES)

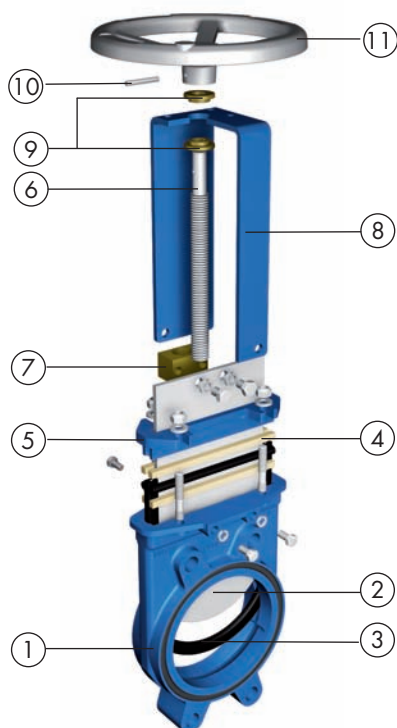
DIR 97/23/CE (PED) Fluid: Group I(b), II (Cat. I, mod. A)

DIR 94/9/CE (ATEX)



Face to face dimensions acc. to EN558-1 serie 20 (replaces K1 DIN3202) up to DN 20"/500mm.

All valves are tested prior to shipping in accordance with the standard developed by the Quality Control Department at ORBINOX.



STANDARD PARTS LIST

Part:	Cast Iron:
1- Body	GJL250(GG25)
2- Gate	AISI 304
3- Seat	EPDM / Nitrile
4- Packing	PTFE Impreg. Synth. Fiber (ST)+O-ring
5- Gland Follower	GJS400 (GGG40)
6- Stem	AISI 430
7- Stem Nut	Brass
8- Yoke	Carbon Steel - Epoxy Coated
9- Bushing	Brass
10- Spring Pin	AISI 1070 (ISO 8752)
11- Handwheel	DN 2"/50mm -12"/300mm: Aluminium (L2520)/ DN ≥ 14"/350mm: GJS400 (GGG40)



Reserves the right to change specifications without notice

ORBINOX CANADA, ORBINOX USA, ORBINOX BRAZIL, ORBINOX SPAIN, ORBINOX UK, ORBINOX FRANCE, ORBINOX GERMANY, ORBINOX INDIA, ORBINOX CHINA, ORBINOX S.E.A.

www.orbinox.com

OBX 02/13 Revision 0
EB(SER.11)-1

MODEL**EB****SERIES 11**

DESIGN FEATURES

BODY:

Wafer style cast **monoblock** design internally machined up to DN 20"/500mm with reinforced ribs in larger diameters for extra body strength. It allows its installation as end of line from DN2"/50mm to DN 12"/300mm.

The design has been developed by a new manufacturing process that machines the inside part of the body, allowing more control in the different dimension tolerances. This allows a perfect adjustment of the body-gate-seal, reducing the torque that keeps the tightness and avoiding any build up of solids that would prevent valve from closing.

The design changes to two part bolted body internally machined from DN 24"/600mm. Full port design for greater flow capacity and minimal pressure drop.

The gate guides on full stroke ensure bi-directional shutoff.

Standard EPDM o-ring on flange connection of the valve for sealing.

GATE:

Stainless steel gate, as standard.

Gate is polished on both sides for a greater seal between the gate with both packing and seat.

Gate is fully guided in the body allowing for bi-directional service.

PACKING:

Standard PTFE impregnated synthetic fiber (ST) with EPDM o-ring for better shut-off.

Long-life braided packing is available in a wide range of materials.

NON RISING STEM:

The standard stainless steel stem offers a high and long corrosion resistant life.

ACTUATORS:

All actuators supplied by **ORBINOX** are interchangeable, and supplied with a standard mounting kit for easy installation on site.

YOKE or ACTUATOR SUPPORT:

Made of EPOXY coated steel (stainless steel available on request).

Compact design makes it extremely robust even under the most severe conditions.

EPOXY COATING:

The epoxy coating on all **ORBINOX** cast iron and carbon steel valve bodies and components is electrostatically applied making the valves to be corrosion resistant with a high quality finished product.

The **ORBINOX** standard colour is RAL-5015 blue.

GATE SAFETY PROTECTION:

***ORBINOX** automated valves are provided with gate guards in accordance with EU Safety Standards.

The design feature prevents any objects from being caught accidentally while the gate is moving.

* IN EUROPE ONLY

OTHER MATERIALS

On request, following materials can be also supplied:

Body:

- Ductile Iron (GGG-40)
- CF8M on some sizes

Gate:

- AISI 316 or 316Ti

Stem:

- AISI 316 or 316 Ti



MODEL

EB

SERIES 11



ACTUATOR TYPES

Manual:

Handwheel (non-rising stem)
Chainwheel (non-rising stem)
Lever
Bevel Gear (non-rising stem)
Handwheel (rising stem)
Others (square nut...)

Automatic:

Double Acting Pneumatic
Electric (rising or non-rising stem)
Single Acting Pneumatic
Hydraulic

All actuators supplied by ORBINOX are interchangeable.

FAIL SAFE SYSTEMS

Used on pneumatic actuated valves

SINGLE ACTING / SPRING RETURN

Available from DN 2"/50mm to DN 8"/200mm

Supply pressure: minimum 75psi/5 kg/cm²-maximum 150psi/10 kg/cm²

Options:

- Fail open
- Fail closed

SINGLE ACTING / VOLUME TANK

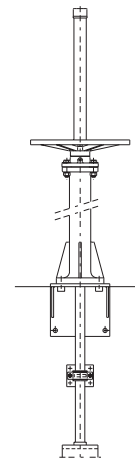
Available for all sizes (DN>8"/200mm)

Options:

- Pneumatic Failsafe
- Pneumatic or Electric Failsafe

ACCESSORIES

Mechanical stops
Locking device
Manual override
Solenoid valves
Positioners
Limit switches
Proximity switches
Floor stands
Stem extensions



Wide range of valve extensions available.

For further information about fail safe systems and valve extensions, please see EX (SER.10) chapter.

We recommend consultation with our technical department.

MODEL**EB****SERIES 11**

TEMPERATURE CHART

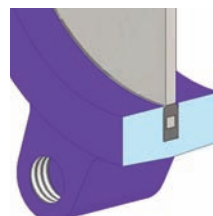
SEAT / SEALS			PACKING				
Material	Max.Temp.(F°) (°C)	Applications	Material	Max. Temp.	(F°)	(°C)	pH
EPDM (E)	248 120	Acid and non mineral oils.	PTFE impregn.synth fibre (ST)	464	240		2 - 13
Nitrile (N)	248 120	Resistance to petroleum products.	Dynapack (DP)	518	270		2 - 14
On request:			Dry cotton (AS)	122	50		6 - 8
Viton (V)	392 200	General chemical service High temperature	Braided PTFE (TH)	500	260		0 - 14
More details and other materials on request.			NOTE: All types include an elastomere O-ring (same material as seal), excluding TH. Standard packing: ST				

SEAT TYPES

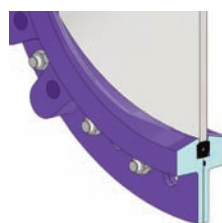
RESILIENT SEAT

This is the standard seat. The joint is seated on the body, fitted with a metallic core, in contact with the gate all over its perimeter. This layout provide an adequate watertightness and seamless liquid flow on both ways, avoiding at the same time any build-up of solids that would prevent the valve from closing. The o-ring is protected by the body itself.

* DN2"/50mm - 20"/500mm: Moulded seal with an internal steel core.



* DN ≥ 24"/600mm: Extruded seal with an internal steel wire.



ATEX



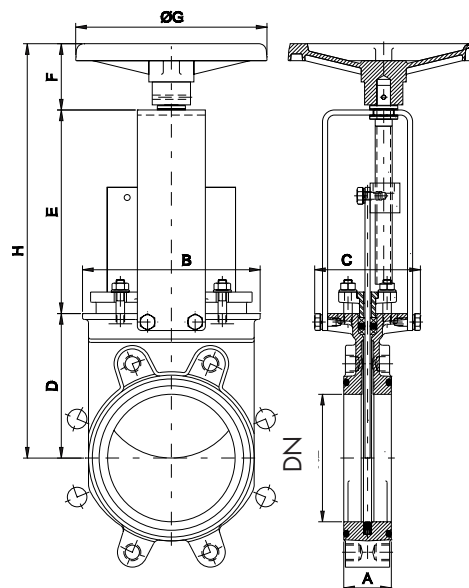
Please contact our Orbinox representative for info and availability. Some considerations:

- Hand operated EB(SER.11) valves have been subjected to an ignition risk assessment according to DIN EN 13463: 1-5 and they are out the scope of application of ATEX Directive. Therefore hand operated valves are suitable for ALL ATEX zones.
- Electrical, pneumatical and hydraulically operated valves must be subjected to a conformity assesment of their own and also of the whole unit valve-actuator to get EC Type Approval to Directive 94/9.

MODEL**EB****SERIES 11**

HANDWHEEL (non-rising stem)

- Standard handwheel actuator.
- Consists of:
 - Handwheel
 - DN 2"/50mm - 12"/300mm: Aluminium
 - DN ≥ 350: GJS400 (GGG40)
 - Stem
 - Yoke bushing
 - Stem nut fixed to the gate
- Available from DN 2"/50mm to DN 40"/1000mm
- Options:
 - Locking Device
 - Extension
 - Square Nut Drive



DN("/mm)	A	B	C	D	E	F	ØG	H	Weight (lbs./kg.)
2"/50	1,70/43	4,49/113	4,88/124	4,13/105	5,20/132	3,07/78	8,86/225	12,40/315	18/8
2,5"/65	1,81/46	5,04/128	4,88/124	4,52/115	5,86/149	3,07/78	8,86/225	13,46/342	20/9
3"/80	1,81/46	5,63/143	4,88/124	4,88/124	6,50/165	3,07/78	8,86/225	14,44/367	22/10
4"/100	2,05/52	6,38/162	4,88/124	5,51/140	7,48/190	3,07/78	8,86/225	16,04/408	26/12
5"/125	2,20/56	7,12/181	4,88/124	6/150	8,42/214	3,07/78	8,86/225	17,40/442	33/15
6"/150	2,20/56	8,22/209	4,88/124	6,69/170	9,44/240	3,07/78	8,86/225	19,21/488	37/17
8"/200	2,36/60	10,35/263	5,60/142	8,07/205	12/305	3,62/92	12,20/310	23,70/602	66/30
10"/250	2,68/68	12,40/315	5,60/142	10/250	14,17/360	3,62/92	12,20/310	27,63/702	92/42
12"/300	3,07/78	14,57/370	5,60/142	11,41/290	16,14/410	3,62/92	12,20/310	31,18/792	132/60
14"/350	3,07/78	16,53/420	7,75/197	12,80/325	19,17/487	4,33/110	16,14/410	36,30/922	198/90
16"/400	4,02/102	18,81/478	7,75/197	14,14/360	21,14/537	4,33/110	16,14/410	39,64/1007	309/140
18"/450	4,49/114	20,86/530	7,91/201	16,14/410	23,18/589	4,37/111	21,65/550	43,70/1110	408/185
20"/500	5/127	23/584	7,91/201	17,71/450	25,55/649	4,37/111	21,65/550	47,63/1210	450/204
24"/600	4,33/110	30/762	7,91/201	20,07/510	32/800	4,37/111	21,65/550	56,45/1434	507/230
28"/700	4,33/110	35,04/890	15,66/398	23,66/601	38,54/979	5,78/147	31,50/800	68/1727	838/380
32"/800	4,33/110	39,84/1012	12,59/320	27,36/695	42,36/1076	5,78/147	31,50/800	75,51/1918	1216/550
36"/900	4,33/110	43,78/1112	12,59/320	31,30/795	43,89/1115	5,78/147	31,50/800	80,98/2057	1499/680
40"/1000	4,33/110	48,81/1240	12,59/320	34,44/875	48,03/1220	5,78/147	31,50/800	88,46/2247	1764/800

A: EN558-1 serie 20 up to DN 20"/500mm

Reserves the right to change specifications without notice

OBX 02/13 Revision 0

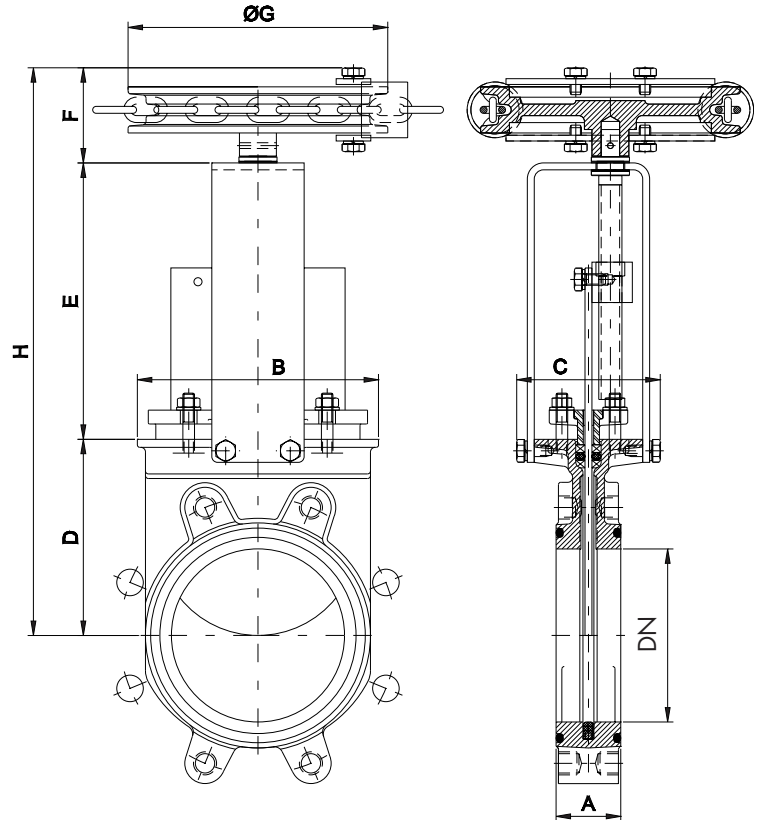
EB(SER.11)-5

ORBINOX CANADA, ORBINOX USA, ORBINOX BRAZIL, ORBINOX SPAIN, ORBINOX UK, ORBINOX FRANCE, ORBINOX GERMANY, ORBINOX INDIA, ORBINOX CHINA, ORBINOX S.E.A.

www.orbinox.com

MODEL**EB****SERIES 11****CHAINWHEEL**

- Recommended for elevated installations.
- Consists of:
 - Chainwheel: Epoxy coated Cast Iron
 - Stem
 - Stem nut
- Available from DN 2"/50mm to DN 24"/600mm
- Options (on request):
 - Locking Device
 - Extensions and floor stand



DN	A	B	C	D	E	F	ØG	H
2"/50	1,70/43	4,49/113	4,88/124	4,13/105	5,20/132	3,23/82	8,86/225	12,56/319
2,5"/65	1,81/46	5,04/128	4,88/124	4,52/115	5,86/149	3,23/82	8,86/225	13,62/346
3"/80	1,81/46	5,63/143	4,88/124	4,88/124	6,50/165	3,23/82	8,86/225	14,60/371
4"/100	2,05/52	6,38/162	4,88/124	5,51/140	7,48/190	3,23/82	8,86/225	16,22/412
5"/125	2,20/56	7,12/181	4,88/124	6/150	8,42/214	3,23/82	8,86/225	17,55/446
6"/150	2,20/56	8,22/209	4,88/124	6,69/170	9,44/240	3,23/82	8,86/225	19,37/492
8"/200	2,36/60	10,35/263	5,60/142	8,07/205	12/305	3,46/88	12/300	23,54/598
10"/250	2,68/68	12,40/315	5,60/142	10/250	14,17/360	3,46/88	12/300	27,48/698
12"/300	3,07/78	14,57/370	5,60/142	11,41/290	16,14/410	3,46/88	12/300	31,02/788
14"/350	3,07/78	16,53/420	7,75/197	12,80/325	19,17/487	3,85/98	17,87/454	35,82/910
16"/400	4,02/102	18,81/478	7,75/197	14,17/360	21,14/537	3,85/98	17,87/454	39,17/995
18"/450	4,49/114	20,86/530	7,91/201	16,14/410	23,18/589	3,85/98	17,87/454	43,18/1097
20"/500	5/127	23/584	7,91/201	17,71/450	25,55/649	3,85/98	17,87/454	47,12/1197
24"/600	4,33/110	30/762	7,91/201	20,07/510	32/800	3,85/98	17,87/454	55,43/1408

A: EN558-1 serie 20 up to DN 20"/500mm

Reserves the right to change specifications without notice

OBX 02/13 Revision 0

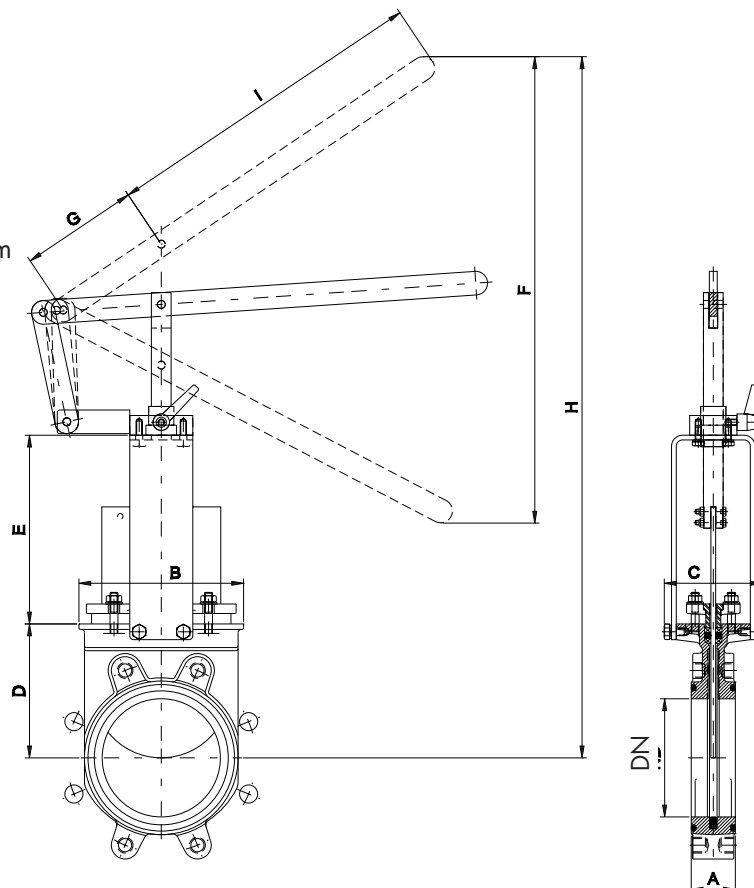
EB(SER.11)-6

ORBINOX CANADA, ORBINOX USA, ORBINOX BRAZIL, ORBINOX SPAIN, ORBINOX UK, ORBINOX FRANCE, ORBINOX GERMANY, ORBINOX INDIA, ORBINOX CHINA, ORBINOX S.E.A.

www.orbinox.com

MODEL**EB****SERIES 11****LEVER**

- Recommended for quick opening and closing.
- Consists of:
 - Lever
 - Stem
 - Yoke sleeve
 - Lever lock
- Available from DN 2"/50mm to DN 6"/150mm



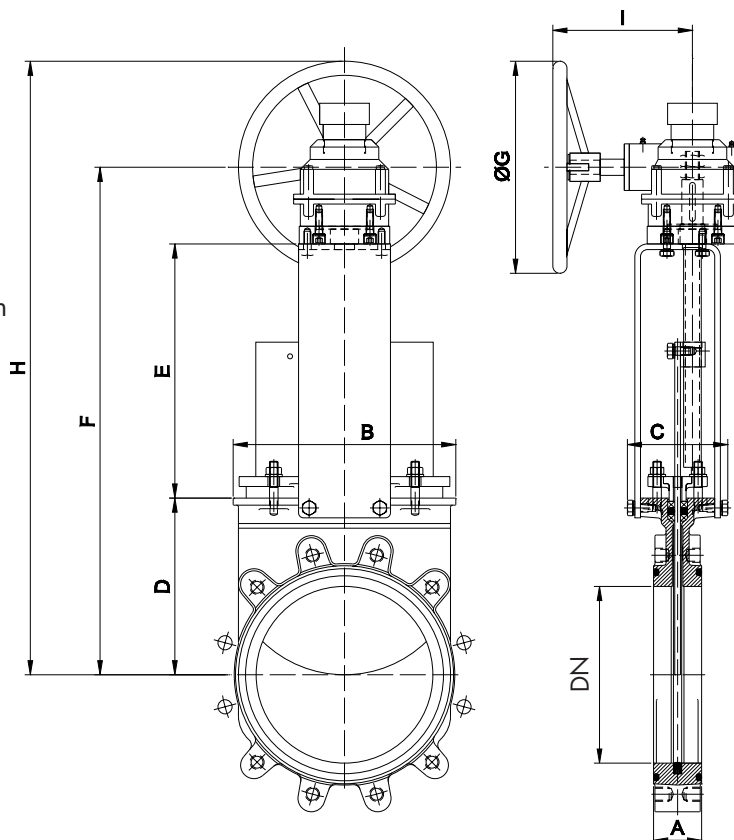
DN	A	B	C	D	E	F	G	H	I
2"/50	1,70/43	4,49/113	4,88/124	4,13/105	5,20/132	9,52/242	6/150	16,14/410	12,40/315
2,5"/65	1,81/46	5,04/128	4,88/124	4,52/115	5,86/149	9,64/245	6/150	17,20/437	12,40/315
3"/80	1,81/46	5,63/143	4,88/124	4,88/124	6,50/165	11,29/287	6/150	20,07/510	12,40/315
4"/100	2,05/52	6,38/162	4,88/124	5,51/140	7,48/190	16,33/415	6/150	24,92/633	16,33/415
5"/125	2,20/56	7,12/181	4,88/124	6/150	8,42/214	19,80/503	6/150	29,72/755	16,33/415
6"/150	2,20/56	8,22/209	4,88/124	6,69/170	9,44/240	23,30/592	6/150	35,03/890	16,33/415

A: EN558-1 serie 20 up to DN 20"/500mm

MODEL**EB****SERIES 11**

GEAR, non-rising stem

- Recommended for valves larger than DN 350 and working pressures greater than 3.5 kg/cm²
- Consists of:
 - Stem
 - Yoke
 - Bevel Gear Actuator with Handwheel (Standard Ratio 4:1)
- Available from DN 8"/200mm to DN 48"/1200mm
- Options:
 - Locking device
 - Extensions
 - Chainwheel
 - Rising stem



DN	A	B	C	D	E	F	ØG	H	I
8"/200	2,36/60	10,35/263	5,59/142	8,07/205	12/305	22,83/580	12/300	28,74/730	8/200
10"/250	2,67/68	12,40/315	5,59/142	9,84/250	14,17/360	26,77/680	12/300	32,67/830	8/200
12"/300	3,07/78	14,56/370	5,59/142	11,41/290	16,14/410	30,31/770	12/300	36,22/920	8/200
14"/350	3,07/78	16,53/420	7,75/197	12,79/325	19,29/490	35/890	18/450	43,89/1115	10,31/262
16"/400	4,01/102	18,81/478	7,75/197	14,17/360	21,25/540	38,38/975	18/450	47,24/1200	10,31/262
18"/450	4,48/114	20,86/530	7,91/201	16,14/410	23,30/592	42,40/1077	18/450	51,37/1305	10,31/262
20"/500	5/127	22,99/584	7,91/201	17,71/450	25,66/652	46,33/1177	18/450	55,31/1405	10,31/262
24"/600	4,33/110	30/762	7,91/201	20,07/510	29,72/755	52,75/1340	18/450	61,61/1565	10,31/262
28"/700	4,33/110	35,03/890	15,67/398	24,01/610	36/900	63,85/1622	18/450	72,71/1847	12,12/308
32"/800	4,33/110	39,84/1012	12,59/320	27,55/700	38,22/971	70,15/1782	18/450	79,01/2007	12,12/308
36"/900	4,33/110	43,78/1112	12,59/320	30,90/785	42,99/1092	78,35/1990	18/450	87,20/2215	12,12/308
40"/1000	4,33/110	48,81/1240	12,59/320	44,09/1120	47,44/1205	96,14/2442	18/450	102,63/2607	12,12/308
48"/1200	6/150	57,87/1470	17,71/450	52,75/1340	58,26/1480	117,95/2996	25/650	130,75/3321	11,39/288

A: EN558-1 serie 20 up to DN 20"/500mm

Reserves the right to change specifications without notice

OBX 02/13 Revision 0
EB(SER.11)-8

ORBINOX CANADA, ORBINOX USA, ORBINOX BRAZIL, ORBINOX SPAIN, ORBINOX UK, ORBINOX FRANCE, ORBINOX GERMANY, ORBINOX INDIA, ORBINOX CHINA, ORBINOX S.E.A.

www.orbinox.com

MODEL

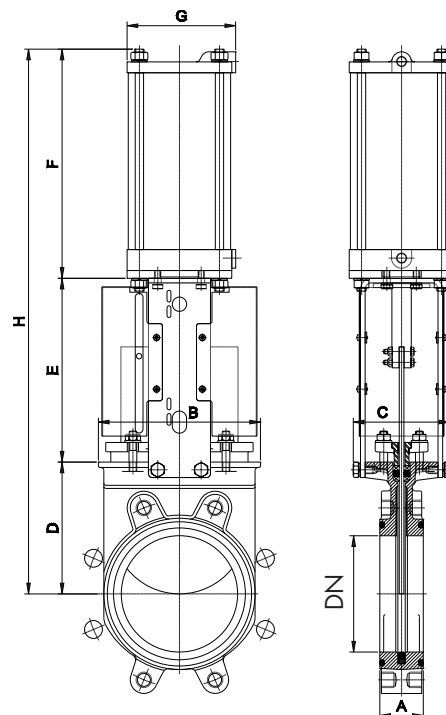
EB

SERIES 11



PNEUMATIC CYLINDER

- The standard pneumatic actuator (double acting on-off cylinder) consists of:
 - DN 50-250: Aluminum barrels
 - DN ≥ 300: Composite barrels
 - Stainless Steel (AISI 304) piston rod
 - Nitrile coated steel piston
- Available from DN 2"/50mm to DN 32"/800mm
- Supply Pressure: minimum 50psi/3.5 kg/cm² - maximum 150psi/10 kg/cm²
Actuator designed with 90psi/6 kg/cm² air supply
- For valves installed in a horizontal position, we recommend U-type support plates and/or actuator support.
- Options (on request):
 - Hard anodized jacket and covers
 - Over / Undersized cylinder
 - Stainless Steel jacket and covers
 - Manual override
 - Fail safe system
 - Travel stops
- Instrumentation (on request):
 - Positioners
 - Flow regulators
 - Solenoid valves
 - Air preparation units



DN	A	B	C	D	E	F	G	H	Weight (lbs./kg.)	Standard Cyl	TM
2"/50	1,70/43	4,49/113	4,88/124	4,13/105	5,07/129	7,00/178	4,52/115	16,22/412	20/9	C4"-2,12"/(100-54)	1/4" G
2,5"/65	1,81/46	5,04/128	4,88/124	4,52/115	5,74/146	7,60/193	4,52/115	17,87/454	22/10	C4"-2,72"/(100-69)	1/4" G
3"/80	1,81/46	5,63/143	4,88/124	4,88/124	6,38/162	8,30/211	4,52/115	19,57/497	24/11	C4"-3,31"/(100-84)	1/4" G
4"/100	2,05/52	6,38/162	4,88/124	5,51/140	7,36/187	9,09/231	4,52/115	21,96/558	30/13.5	C4"-4,09"/(100-104)	1/4" G
5"/125	2,20/56	17,12/181	4,88/124	6/150	8,30/211	10,66/271	5,51/140	24,88/632	42/19	C5"-5,07"/(125-129)	1/4" G
6"/150	2,20/56	8,22/209	4,88/124	6,69/170	9,33/237	11,65/296	5,51/140	27,67/703	48/22	C5"-6,06"/(125-154)	1/4" G
8"/200	2,36/60	10,35/263	5,60/142	8,07/205	12,16/309	14,09/358	6,89/175	34,33/872	104/47	C6.30"-8,03"/(160-204)	1/4" G
10"/250	2,68/68	12,40/315	5,60/142	10/250	14,33/364	16,85/428	8,66/220	41,02/ 1042	128/58	C8"-10"/(200-254)	3/8" G
12"/300	3,07/78	14,57/370	5,60/142	11,41/290	16,30/414	18,81/478	8,66/220	46,55/1182	185/84	C8"-11,96"/(200-304)	3/8" G
14"/350	3,07/78	16,53/420	7,75/197	12,80/325	20/500	21,61/549	10,90/277	54,09/ 1374	287/130	C10"-13,93"/(250-354)	3/8" G
16"/400	4,02/102	18,81/478	7,75/197	14,17/360	21,65/550	23,58/599	10,90/277	59,40/ 1509	400/181	C10"-15,90"/(250-404)	3/8" G
18"/450	4,49/114	20,86/530	10,62/270	16,14/410	23,54/598	26,77/680	15,03/382	66,45/1688	518/235	C12"-17,87"/(300-454)	1/2" G
20"/500	5/127	23/584	10,62/270	18/450	25,90/658	28,74/730	15,03/382	72,36/ 1838	666/302	C12"-19,84"/(300-504)	1/2" G
24"/600	4,33/110	30/762	10,62/270	20,07/510	29,84/758	32,66/830	15,03/382	82,59/2098	694/315	C12"-23,89"/(300-607)	1/2" G
28"/700	4,33/110	35,04/890	14,96/380	23,66/601	34,44/875	38,77/985	17,48/444	96,88/ 2461	1058/480	C14"-28,07"/(350-713)	3/4" G
32"/800	4,33/110	39,84/1012	12,60/320	27,36/695	38,35/974	42,77/1085	17,48/444	108,42/2754	1290/585	C14"-32,00"/(350-813)	3/4" G

A: EN558-1 serie 20 up to DN 20"/500mm

Reserves the right to change specifications without notice

OBX 02/13 Revision 0
EB(SER.11)-9

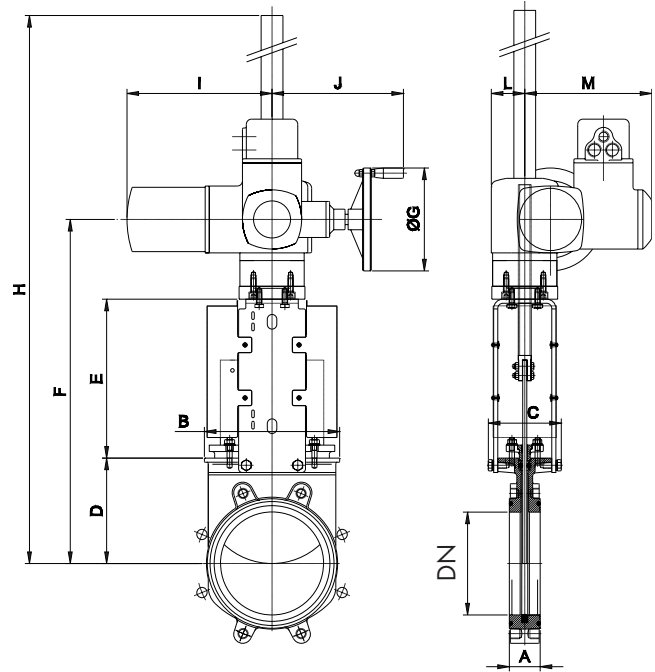
ORBINOX CANADA, ORBINOX USA, ORBINOX BRAZIL, ORBINOX SPAIN, ORBINOX UK, ORBINOX FRANCE, ORBINOX GERMANY, ORBINOX INDIA, ORBINOX CHINA, ORBINOX S.E.A.

www.orbinox.com

MODEL**EB****SERIES 11**

ELECTRIC ACTUATOR (rising stem)

- Consists of:
 - Electric motor
 - Rising stem
 - Motor support yoke flange
(Acc. to ISO 5210 / DIN 3338)
- The standard electric motor is equipped with:
 - Manual emergency operation
 - Limit switches (open/closed)
 - Torque switches
- Available from DN 2"/50mm to DN 48"/1200mm
- Wide range of types and makes available to meet customer's needs.



DN	A	B	C	D	E	F	ØG	H	I	J	L	M	StemØxpitch	Torque(ft.LBS/Nm)
2"/50	1,69/43	4,44/113	4,88/124	4,13/105	5,07/129	14,84/377	5,51/140	20,94/532	10,43/265	9,80/249	2,48/63	9,33/237	0,79x0.16/20 x 4	7.4/10
2,5"/65	1,81/46	5,04/128	4,88/124	4,52/115	5,74/146	15,90/404	5,51/140	23,62/600	10,43/265	9,80/249	2,48/63	9,33/237	0,79x0.16/20 x 4	7.4/10
3"/80	1,81/46	5,62/143	4,88/124	4,88/124	6,37/162	16,88/429	5,51/140	26,73/674	10,43/265	9,80/249	2,48/63	9,33/237	0,79x0.16/20 x 4	7.4/10
4"/100	2,04/52	6,37/162	4,88/124	5,51/140	7,36/187	18,50/470	5,51/140	26,18/665	10,43/265	9,80/249	2,48/63	9,33/237	0,79x0.16/20 x 4	7.4/10
5"/125	2,20/56	7,12/181	4,88/124	5,90/150	8,30/211	19,84/504	5,51/140	27,55/700	10,43/265	9,80/249	2,48/63	9,33/237	0,79x0.16/20 x 4	11.1/15
6"/150	2,20/56	8,22/209	4,88/124	6,69/170	9,33/237	21,65/550	5,51/140	44,09/1120	10,43/265	9,80/249	2,48/63	9,33/237	0,79x0.16/20 x 4	14.8/20
8"/200	2,36/60	10,35/263	5,59/142	8,07/205	12,16/309	25,86/657	6,30/160	48,70/1237	10,43/282	9,80/249	2,48/63	9,33/237	0,94x0.2/24 x 5	22.2/30
10"/250	2,67/68	12,40/315	5,59/142	10/250	14,33/364	29,80/757	6,30/160	52,63/1337	10,43/282	9,80/249	2,48/63	9,33/237	0,94x0.2/24 x 5	33.3/45
12"/300	3,07/78	14,56/370	5,59/142	11,41/290	16,29/414	33,34/847	6,30/160	56,18/1427	10,43/282	9,80/249	2,48/63	9,33/237	0,94x0.2/24 x 5	29.50/40
14"/350	3,07/78	16,53/420	7,75/197	12,79/325	20/500	37,59/955	7,87/200	60,43/1535	10,43/282	10,07/256	2,55/65	9,33/247	1,42x0.24/36 x 6	51.8/70
16"/400	4,02/102	18,81/478	7,75/197	14,17/360	21,65/550	40,94/1040	7,87/200	63,77/1620	10,43/282	10,07/256	2,55/65	9,33/247	1,42x0.24/36 x 6	66.38/90
18"/450	4,48/114	20,86/530	10,63/270	16,14/410	23,64/598	44,44/1129	7,87/200	67,87/1724	10,43/282	10,07/256	2,55/65	9,33/247	1,42x0.24/36 x 6	81.4/110
20"/500	5/127	26,93/684	10,63/270	18/450	25,90/658	48,74/1238	7,87/200	72,16/1833	10,43/282	10,07/256	2,55/65	9,33/247	1,42x0.24/36 x 6	70.06/95
24"/600	4,33/110	30/762	10,63/270	19,80/503	29,84/758	54,17/1376	12,40/315	82,40/2093	15,07/383	12,75/324	3,54/90	11,22/285	1,42x0.24/36 x 6	103.26/140
28"/700	4,33/110	35,04/890	14,96/380	24,01/610	34,44/875	65,35/1660	12,40/315	110,23/2800	15,07/383	12,75/324	3,54/90	11,22/285	1,57x0.27/40 x 7	88.50/120
32"/800	4,33/110	39,84/1012	12,59/320	27,36/695	38,54/979	72,79/1849	12,40/315	117,67/2989	15,07/383	13,07/332	3,54/90	11,22/285	1,97x0.31/50 x 8	132.26/180
36"/900	4,33/110	43,77/1112	12,59/320	31,30/795	43,89/1115	82,08/2085	16/400	126,96/3225	15,07/383	13,07/332	3,54/90	11,22/285	1,97x0.31/50 x 8	163.74/220
40"/1000	4,33/110	48,81/1240	12,59/320	34,44/875	48,22/1225	89,56/2275	16/400	135,03/3430	15,07/383	13,07/332	3,54/90	11,22/285	1,97x0.31/50 x 8	221.27/300
48"/1200	5,90/150	57,87/1470	18/450	52,75/1340	57,28/1455	118,30/3005	20/500	174,40/4430	17,16/436	13,18/335	4,52/115	12,08/307	2,36x0.35/60 x 9	354.03/480

A: EN558-1 serie 20 up to DN20"/500

Maximum pressure torque in clean water at room temperature

OBX 02/13 Revision 0

EB(SER.11)-10

Reserves the right to change specifications without notice

ORBINOX CANADA, ORBINOX USA, ORBINOX BRAZIL, ORBINOX SPAIN, ORBINOX UK, ORBINOX FRANCE, ORBINOX GERMANY, ORBINOX INDIA, ORBINOX CHINA, ORBINOX S.E.A.

www.orbinox.com

MODEL

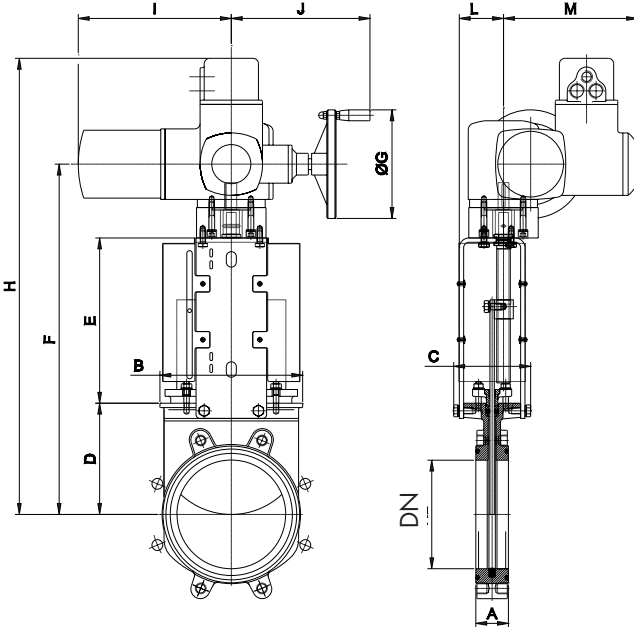
EB

SERIES 11



ELECTRIC ACTUATOR (non-rising stem)

- Consists of:
 - Electric motor
 - Non rising stem
 - Motor support yoke flange (Acc. to ISO 5210 / DIN 3338)
- The standard electric motor is equipped with:
 - Manual emergency operation
 - Limit switches (open/closed)
 - Torque switches
- Available from DN 2"/50mm to DN 48"/1200mm
- Wide range of types and makes available to meet customer's needs.



DN	A	B	C	D	E	F	ØG	H	I	J	L	M	StemØxpitch	Torque(ft.LBS/Nm)
2"/50	1,70/43	4,49/113	4,88/124	4,13/105	5,19/132	14,56/370	5,51/140	21,45/545	10,43/265	9,21/234	2,83/72	9,33/237	0,79 x 0,11/20 x 3	7,4/10
2,5"/65	1,81/46	5,04/128	4,88/124	4,52/115	5,86/149	15,63/397	5,51/140	22,51/572	10,43/265	9,21/234	2,83/72	9,33/237	0,79 x 0,11/20 x 3	7,4/10
3"/80	1,81/46	5,63/143	4,88/124	4,88/124	6,49/165	16,61/422	5,51/140	23,50/597	10,43/265	9,21/234	2,83/72	9,33/237	0,79 x 0,11/20 x 3	7,4/10
4"/100	2,05/52	6,38/162	4,88/124	5,51/140	7,48/190	18,22/463	5,51/140	25,11/638	10,43/265	9,21/234	2,83/72	9,33/237	0,79 x 0,11/20 x 3	7,4/10
5"/125	2,20/56	17,12/181	4,88/124	6/150	8,42/214	19,56/497	5,51/140	26,45/672	10,43/265	9,21/234	2,83/72	9,33/237	0,79 x 0,11/20 x 3	11,1/15
6"/150	2,20/56	8,22/209	4,88/124	6,69/170	9,45/240	21,38/543	5,51/140	28,27/718	10,43/265	9,21/234	2,83/72	9,33/237	0,79 x 0,11/20 x 3	14,8/20
8"/200	2,36/60	10,35/263	5,59/142	8,07/205	13,19/335	26,81/681	6,30/160	33,70/856	10,43/265	9,84/250	3,22/82	9,33/237	0,94 x 0,2/24 x 5	22,2/30
10"/250	2,68/68	12,40/315	5,59/142	10/250	14,17/360	29,57/751	6,30/160	36,45/926	10,43/265	9,84/250	3,22/82	9,33/237	0,94 x 0,2/24 x 5	33,3/45
12"/300	3,07/78	14,57/370	5,59/142	11,41/290	16,14/410	33,11/841	6,30/160	40/1016	10,43/265	9,84/250	3,22/82	9,33/237	0,94 x 0,2/24 x 5	29,50/40
14"/350	3,07/78	16,53/420	7,75/197	12,80/325	19,17/487	36,41/925	8/200	43,31/1100	11,10/282	10,07/256	5,03/128	9,72/247	1,42 x 0,24/36 x 6	51,8/70
16"/400	4,02/102	18,81/478	7,75/197	14,17/360	21,14/537	39,76/1010	8/200	46,65/1185	11,10/282	10,07/256	5,03/128	9,72/247	1,42 x 0,24/36 x 6	66,38/90
18"/450	4,49/114	20,86/530	10,62/270	16,14/410	23,19/589	43,77/1112	8/200	50,66/1287	11,10/282	10,07/256	5,11/130	9,72/247	1,42 x 0,24/36 x 6	81,4/110
20"/500	5/127	23/584	10,62/270	18/450	25,55/649	47,71/1212	8/200	54,60/1387	11,10/282	10,07/256	5,11/130	9,72/247	1,42 x 0,24/36 x 6	70,06/95
24"/600	4,33/110	30/762	10,62/270	19,80/503	32,00/813	59,01/1500	12,40/315	66,33/1685	15,15/385	12,79/325	5,11/130	11,22/285	1,42 x 0,24/36 x 6	103,26/140
28"/700	4,33/110	35,04/890	14,96/380	24,01/610	35,04/890	66,14/1680	12,40/315	73,42/1865	15,15/385	12,79/325	7,95/202	11,22/285	1,57 x 0,27/40 x 7	88,50/120
32"/800	4,33/110	39,84/1012	12,60/320	27,36/695	38,58/980	73,03/1855	12,40/315	80,31/2040	15,15/385	12,79/325	7,95/202	11,22/285	1,97 x 0,31/50 x 8	132,26/180
36"/900	4,33/110	39,84/1112	12,60/320	31,29/795	43,19//1097	81,57/2072	16/400	88,85/2257	15,15/385	13,07/332	7,95/202	11,22/285	1,97 x 0,31/50 x 8	163,74/220
40"/1000	4,33/110	48,81/1240	12,60/320	34,44/875	47,44/1205	88,97/2260	16/400	96,26/2445	15,15/385	13,07332	7,95/202	11,22/285	1,97 x 0,31/50 x 8	221,27/300
48"/1200	6/150	57,87/1470	18/450	52,75/1340	62,99/1600	124,01/3150	20/500	131,30/3335	20,07/510	13,97/355	11,18/284	12,08/307	2,36 x 0,35/60 x 9	354,03/480

A: EN558-1 serie 20 up to DN20"/500

Maximum pressure torque in clean water at room temperature

Reserves the right to change specifications without notice

OBX 02/13 Revision 0




EB(SER.11)-11

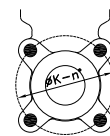
ORBINOX CANADA, ORBINOX USA, ORBINOX BRAZIL, ORBINOX SPAIN, ORBINOX UK, ORBINOX FRANCE, ORBINOX GERMANY, ORBINOX INDIA, ORBINOX CHINA, ORBINOX S.E.A.

www.orbinox.com

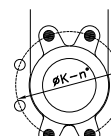
FLANGE AND BOLTING DETAILS

ANSI B16.5, class 150

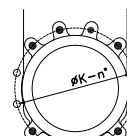
DN	K	n°	M	T	  
2"	4 3/4"	4	5/8" UNC	3/8"	4 - 0 - 0
2 1/2"	5 1/2"	4	5/8" UNC	3/8"	4 - 0 - 0
4"	7 1/2"	8	5/8" UNC	3/8"	4 - 4 - 0
5"	8 1/2"	8	3/4" UNC	3/8"	4 - 4 - 0
6"	9 1/2"	8	3/4" UNC	1/2"	4 - 4 - 0
8"	11 3/4"	8	3/4" UNC	1/2"	4 - 4 - 0
10"	14 1/4"	12	7/8" UNC	3/4"	8 - 4 - 0
12"	17"	12	7/8" UNC	3/4"	8 - 4 - 0
14"	18 3/4"	12	1" UNC	7/8"	4 - 4 - 4
16"	21 1/4"	16	1" UNC	1"	8 - 4 - 4
18"	22 3/4"	16	1 1/8" UNC	1"	12 - 4 - 4
20"	25"	20	1 1/8" UNC	1"	18 - 10 - 0
30"	36"	28	1 1/4" UNC	3/4"	20 - 8 - 0
42"	49 1/2"	36	1 1/2" UNC	3/4"	24 - 12 - 0



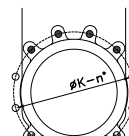
DN 2" - 2 1/2"



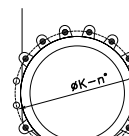
DN 4" - 8"



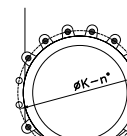
DN 10" - 12"



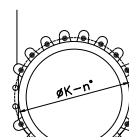
DN 14"



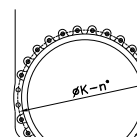
DN 16"



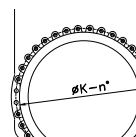
DN 18"



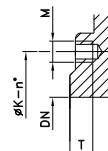
DN 20"






DN 30"






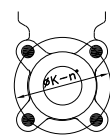
DN 42"



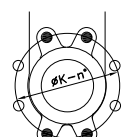
-  BLIND TAPPED HOLES
-  THROUGH HOLES
-  THREADED THROUGH HOLES

EN 1092-2 PN 10

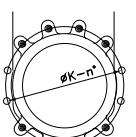
DN	K	n°	M	T	  
50	125	4	M-16	10	4 - 0 - 0
65	145	4	M-16	10	4 - 0 - 0
80	160	8	M-16	12	4 - 4 - 0
100	180	8	M-16	12	4 - 4 - 0
125	210	8	M-16	14	4 - 4 - 0
150	240	8	M-20	14	4 - 4 - 0
200	295	8	M-20	14	4 - 4 - 0
250	350	12	M-20	18	8 - 4 - 0
300	400	12	M-20	21	8 - 4 - 0
350	460	16	M-20	21	6 - 4 - 6
400	515	16	M-24	28	6 - 4 - 6
450	565	20	M-24	30	12 - 4 - 4
500	620	20	M-24	40	8 - 4 - 8
600	725	20	M-27	26	12 - 8 - 0
700	840	24	M-27	20	16 - 8 - 0
800	950	24	M-30	20	16 - 8 - 0
900	1050	28	M-30	20	20 - 8 - 0
1000	1160	28	M-33	20	20 - 8 - 0
1200	1380	32	M-36	35	22 - 10 - 0



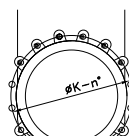
DN 50-65



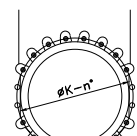
DN 80-200



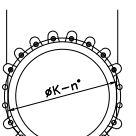
DN 250-300



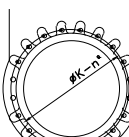
DN 350-400



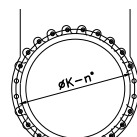
DN 450



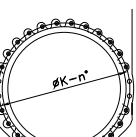
DN 500



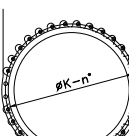
DN 600



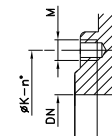
DN 700-800






DN 900-1000



DN 1200



-  BLIND TAPPED HOLES
-  THROUGH HOLES
-  TAPPED THROUGH